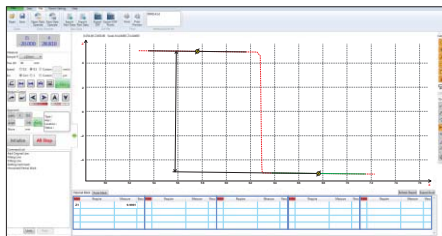


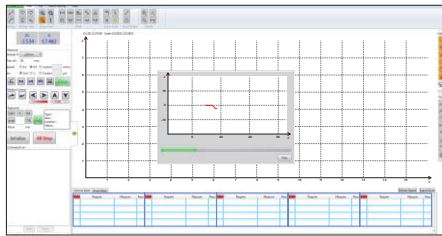
# SURFACE PROFILE MEASURING MACHINE CODE SPM-1000



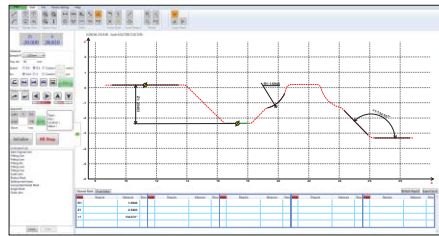
- Software is included, for surface profile measurement and data output
- Probe compensation
- Output as format txt, csv, etc.
- Large range design, the leverage ratio is 1:2.2, maintain the original accuracy of the sensor
- The overall structure of the Z-axis sensor does not have any elastic components, ensuring the measuring force is constant regardless the position of probe



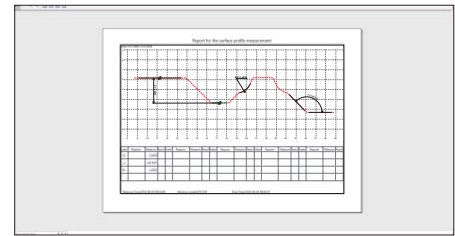
calibration



contour scanning



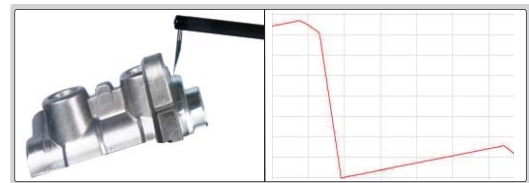
dimension measurement



data output

## SPECIFICATION

X axis measuring range	140mm
X axis resolution	0.2 $\mu$ m
X axis straightness	0.8 $\mu$ m/100mm
X axis traverse speed	0.1~10mm/s
Z axis measuring range	$\pm$ 20mm
Z axis resolution	0.05 $\mu$ m
Z axis traverse speed	0.5~10mm/s
Linear accuracy	$\pm(1.5+ 0.2H )\mu$ m, H is measuring height in mm
Angular measuring accuracy	$\pm 2'$
Arc measuring accuracy	$\pm(2+R/8)\mu$ m, R is 2~10mm standard ball
Radius of probe tip	25 $\mu$ m
Traverse direction	backward
Measuring force	6.86~9.8mN
Measuring unit	mm/inch
Traceable angle	72° (upward), 87° (downward)
Drive mode	motor
Travel of Z axis	430mm
Dimension (L*W*H)	1200*700*1780mm
Power supply	220 $\pm$ 5%V, 50Hz
Weight	320kg



standard balls (included)



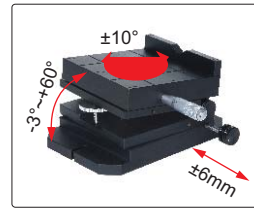
standard blocks (included)



standard shaft (included)

## STANDARD DELIVERY

Main unit	1 pc
Standard stylus and arm	1 pc of each
Standard block	2 pcs
Standard ball	2 pcs
Standard shaft	1 pc
Stage	1 pc
Vise	1 pc
Measuring arm	1 pc
Computer	1 pc
Measurement software	1 pc
Printer	1 pc
Installation tools	1 set



stage (included)



vise (included)

## OPTIONAL ACCESSORY

Probe	see details
-------	-------------

## SPECIFICATION OF PROBES

Unit: mm

<p><b>chisel stylus</b></p> <p>code <b>SPM-1000-T01</b> (H=32mm, included)  code <b>SPM-1000-T02</b> (H=48mm, optional)  code <b>SPM-1000-T03</b> (H=68mm, optional)</p>	<p><b>cone stylus</b></p> <p>code <b>SPM-1000-Z01</b> (H=32mm, optional)  code <b>SPM-1000-Z02</b> (H=48mm, optional)  code <b>SPM-1000-Z03</b> (H=68mm, optional)</p>	<p><b>ball stylus</b></p> <p>code <b>SPM-1000-R01</b> (H=32mm, optional)  code <b>SPM-1000-R02</b> (H=48mm, optional)  code <b>SPM-1000-R03</b> (H=68mm, optional)</p>
<p><b>standard arm, code SPM-1000-SP (included), stylus is not included</b></p>	<p><b>probe for small holes, code SPM-1000-SBP (optional), stylus is included</b></p> <p>measure the contour of holes with diameter &gt; Ø8mm</p>	
<p><b>transverse probe, code SPM-1000-LP (optional), stylus is included</b></p> <p>measure the contour of holes in radial direction</p>		